

OUTDOOR LED LIGHTING

SHOSHA/FL

EY313

LED FLOODLIGHT

EYELITE

MS CE

Go-Kart Circuit, Sri Lanka



EY313-120W



EY313-180W



EY313-240W

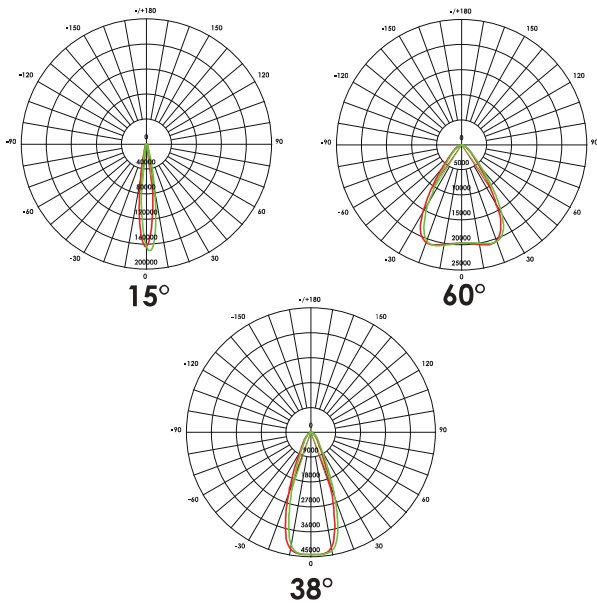


EY313-360W



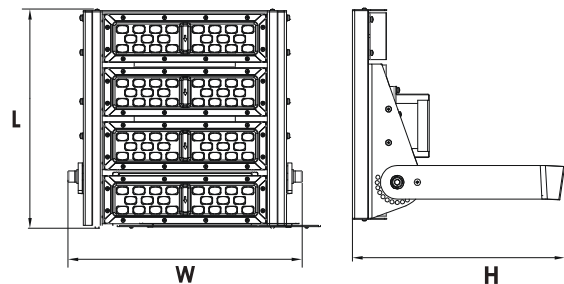
EY313-450W

PHOTOMETRY/BEAM ANGLE

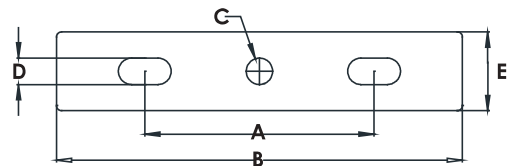


PRODUCT DIMENSION

*Typical Dimension (mm)



BRACKET MOUNTING INFO



Model	Bracket Mounting Dimension (mm)				
	A	B	C	D	E
120W	112	189	Ø 16	Ø 12	40
180W					
240W					
360W					
450W	159	300	Ø 30	Ø 15	60

MS : Malaysia Standard

TECHNICAL DATA



IK08

IP66

DIMMABLE LED DRIVER

LED FLOODLIGHT

MODEL NO.	EY313-120W	EY313-180W	EY313-240W	EY313-360W	EY313-450W
Power Consumption $\pm 5\%$ (W)	120W	180W	240W	360W	450W
Luminaire Flux $\pm 5\%$ (lm)	13,800 lm	21,600 lm	28,800 lm	43,200 lm	56,250 lm
System Efficacy $\pm 5\%$ (lm/W)	115 lm/W	120 lm/W	120 lm/W	120 lm/W	125 lm/W
Power Factor (PF)	0.96	0.96	0.96	0.96	0.96
HID Equivalent	MH 250W	MH 400W	MV 600W	MH/HPS 1000W	MH/HPS 1000W
Surge Protection Device (kA/kV)	I _{max} 25kA (50kV)	I _{max} 25kA (50kV)	I _{max} 25kA (50kV)	I _{max} 25kA (50kV)	I _{max} 25kA (50kV)
Net Weight (kg)	6.50	7.80	8.80	13.35	18.57
Gross Weight (kg)	7.70	8.85	9.80	14.60	20.55
Product Dimension, L x W x H (mm)	158 x 366 x 302	235 x 385 x 315	315 x 385 x 315	470 x 385 x 340	384 x 571 x 415
Carton Dimension, L x W x H (mm)	240 x 400 x 320	360 x 430 x 285	380 x 430 x 280	525 x 435 x 285	510 x 690 x 260
CBM (m ³)	0.031	0.044	0.046	0.065	0.091

Note: The above specified lumen and system efficiency based on standard CCT: 5000K.

TECHNICAL SPECIFICATION

ELECTRICAL SYSTEM

- **Input Voltage** : 100 - 240Vac, 50/60Hz
- **Insulation Class** : Class I
- **LED Driver** : Inventronics IP67 with 0-10V PWM/ Timer Dimmable

LIGHT SOURCE / OPTIC

- **LED Type** : SMD 3535 / 5050 with LM80
- **Color Temperature (CCT)** : Standard 5000K (2200K, 3000K & others upon request)
- **Color Rendering Index (CRI)** : Ra > 70 (Ra > 80, 90 upon request)
- **Life Time Residual Flux** : (L70), >50,000 hours @ Ta : 45°C
- **Optical System** : 15°, 38° and 60° PC lens IP66 : 90° PC lens upon request

FIXTURE/HOUSING

- **Ingress Protection (IP)** : IP66
- **Impact Resistance (IK)** : IK08
- **Housing Finish** : Akzo Nobel Epoxy Powder Coating - Black
- **Vibration Resistance** : 2G, 3D 100,000 Vibration Cycle Test

CERTIFICATION AND COMPLIANCE TEST

- **Type Test Certified (Luminaire)** : MS IEC 60598-1 : MS IEC 60598-2-5, IEC 62471 : EN 62493
- **EMC Certified** : EN 61000-3-2, EN 61000-3-3 : EN 55015, EN 61547
- **LED Compliance Test** : IESNA LM-80 : TM-21
- **Ingress Protection Test** : IEC 60529 (IP66)
- **Impact Resistance Test** : IEC 62262 (IK08)
- **RoHS** : IEC 62321

APPLICATION

- High Mast Lighting • Façade Lighting • Signboard Lighting
- Field Lighting • Port Lighting • Event Lighting

OPTIONAL FEATURES/ACCESSORIES

- Motion Sensor
- DALI dimming available upon request
- IoT Smart Lighting Control
- 1000 hours Salt Fog Resistant Version Available Upon Request